

Allan Avis architects

60 West Street
Goderich, ON N7A 2K3
www.AllanAvisArchitects.com

T 519 524 5313
F 519 524 5253

ISSUED FOR

15JUN2015 BID READY

Rev. No. DATE REMARKS

BID READY

NOT TO BE USED FOR CONSTRUCTION

Renovations and Addition at
Blyth Memorial Community Hall
431 Queen Street,
Blyth, Ontario
Lower Floor Plan

scale: 3/16" = 1'-0"

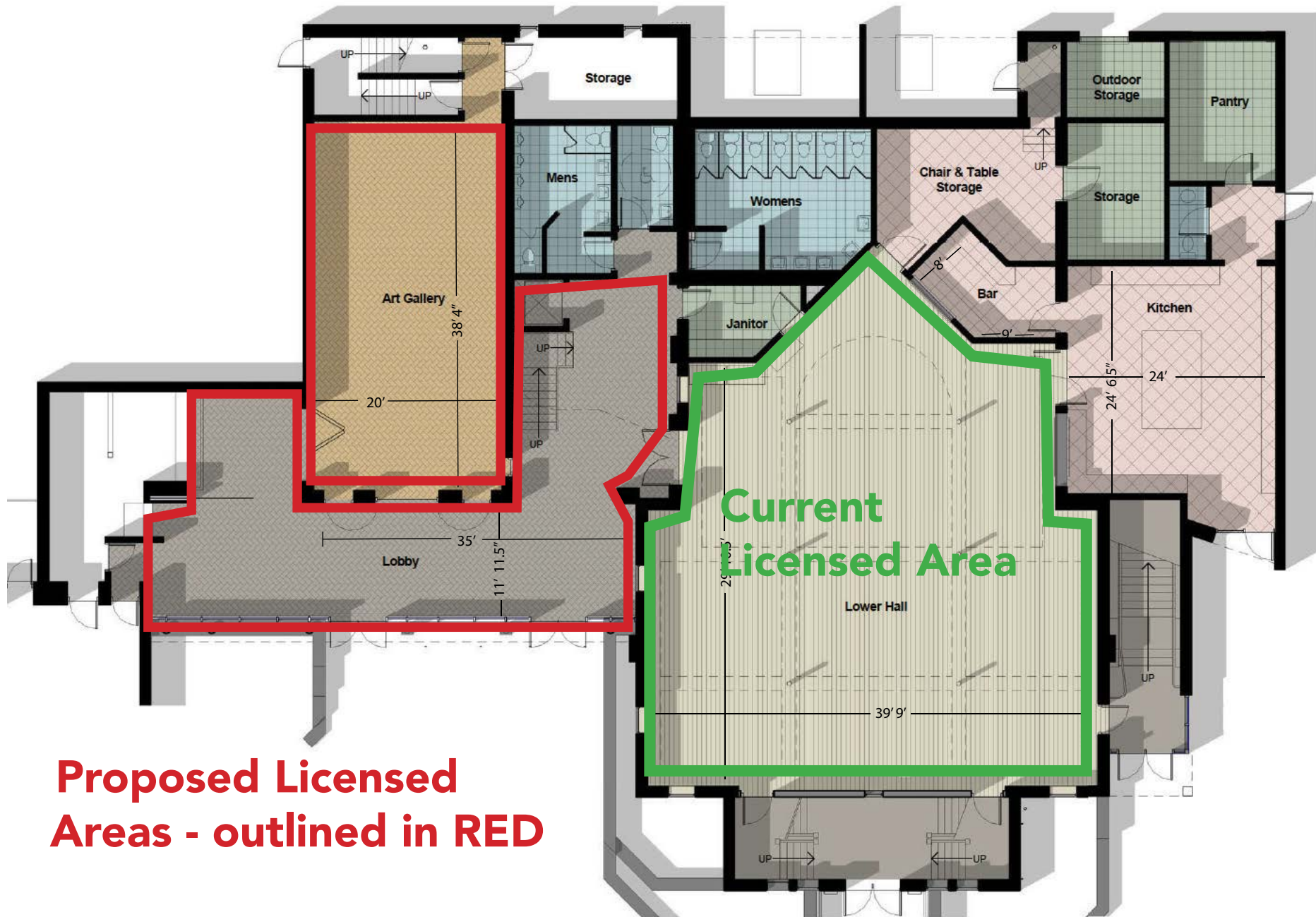
detail: a - Detail number, b - Location drawing

drawn: BY, check: JM

date: 09/25/14, sheet: A1.0

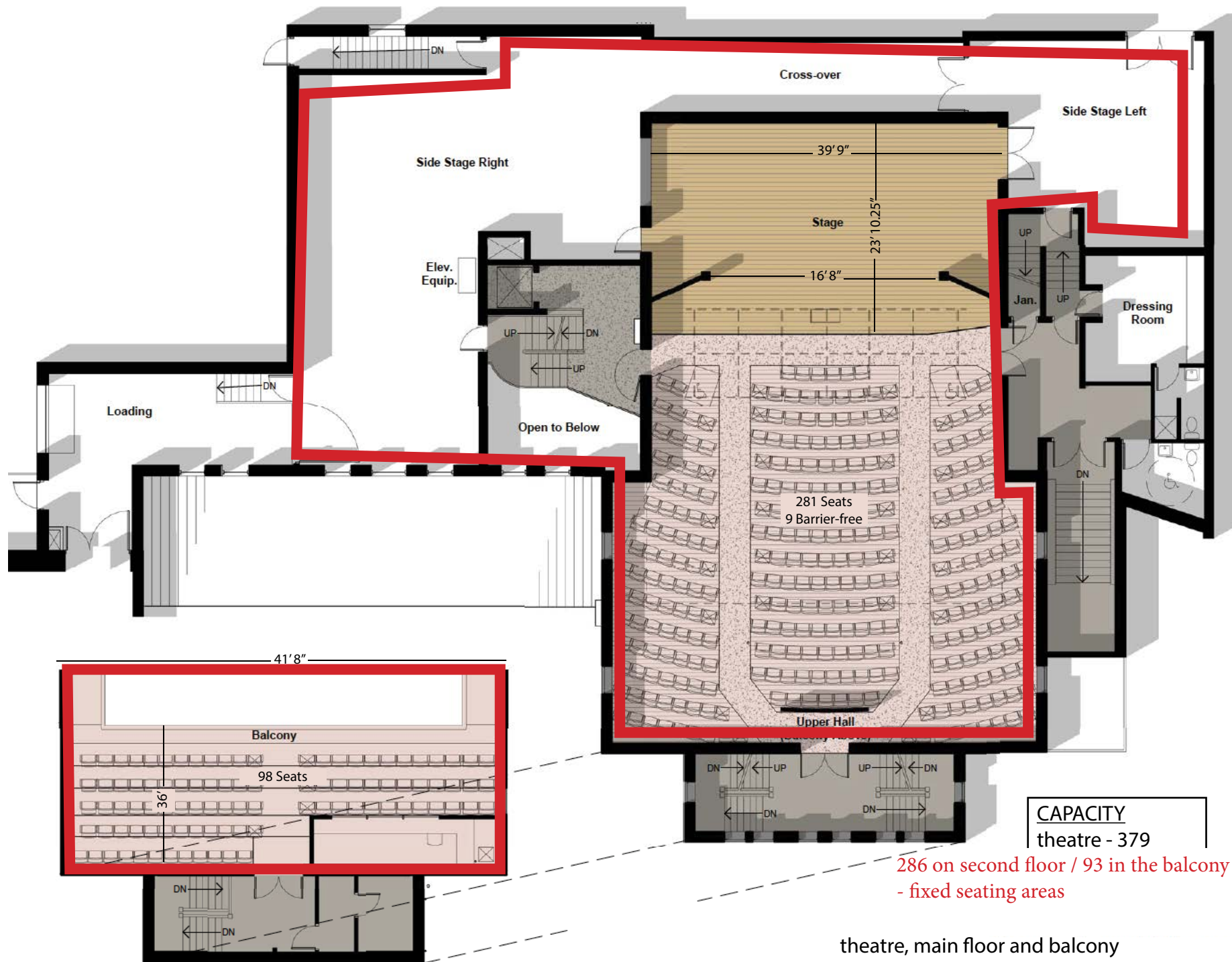
job: 1450.00

Street level - Art Gallery And Lobby area proposed new areas.
Lower Hall - current license boundary



**Proposed Licensed
Areas - outlined in RED**

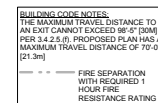
NOTE: Same areas as outlined on page 1.



WT1 5/8" GYPSUM BOARD
3 5/8" STEEL STUDS @ 16" O.C.
MINERAL FIBRE SOUND BATT INSULATION
5/8" GYPSUM BOARD

WT2 5/8" GYPSUM BOARD
3 5/8" STEEL STUDS @ 16" O.C.
5/8" GYPSUM BOARD

WT5 5/8" GYPSUM BOARD
3 5/8" STEEL STUDS @ 16" O.C.
MINERAL FIBRE FIRE BATT INSULATION
5/8" GYPSUM BOARD
(1 HOUR FIRE RATING REQUIRED)



Allan Avis
architects

60 West Street
Goderich, ON N7A 2K3

T 519 524 5313
F 519 524 5253

www.AllanAvisArchitects.com

Rev No DATE CONSTRUCTION REMARKS

ISSUED FOR

All measurements must be checked on the work by
the Contractor.

Do not scale the drawing.

Do not use this drawing for construction until sealed
and signed by Architect.

Signing Architect has exercised responsible control
with respect to design activities



Renovations and Addition at
Blyth Memorial Community Hall
431 Queen Street,
Blyth, Ontario
Upper Floor Plan

scale : $3/16" = 1'-0"$



detail :

a - Detail number
b - Location drawing

drawn :	BY	check :	JM
---------	----	---------	----

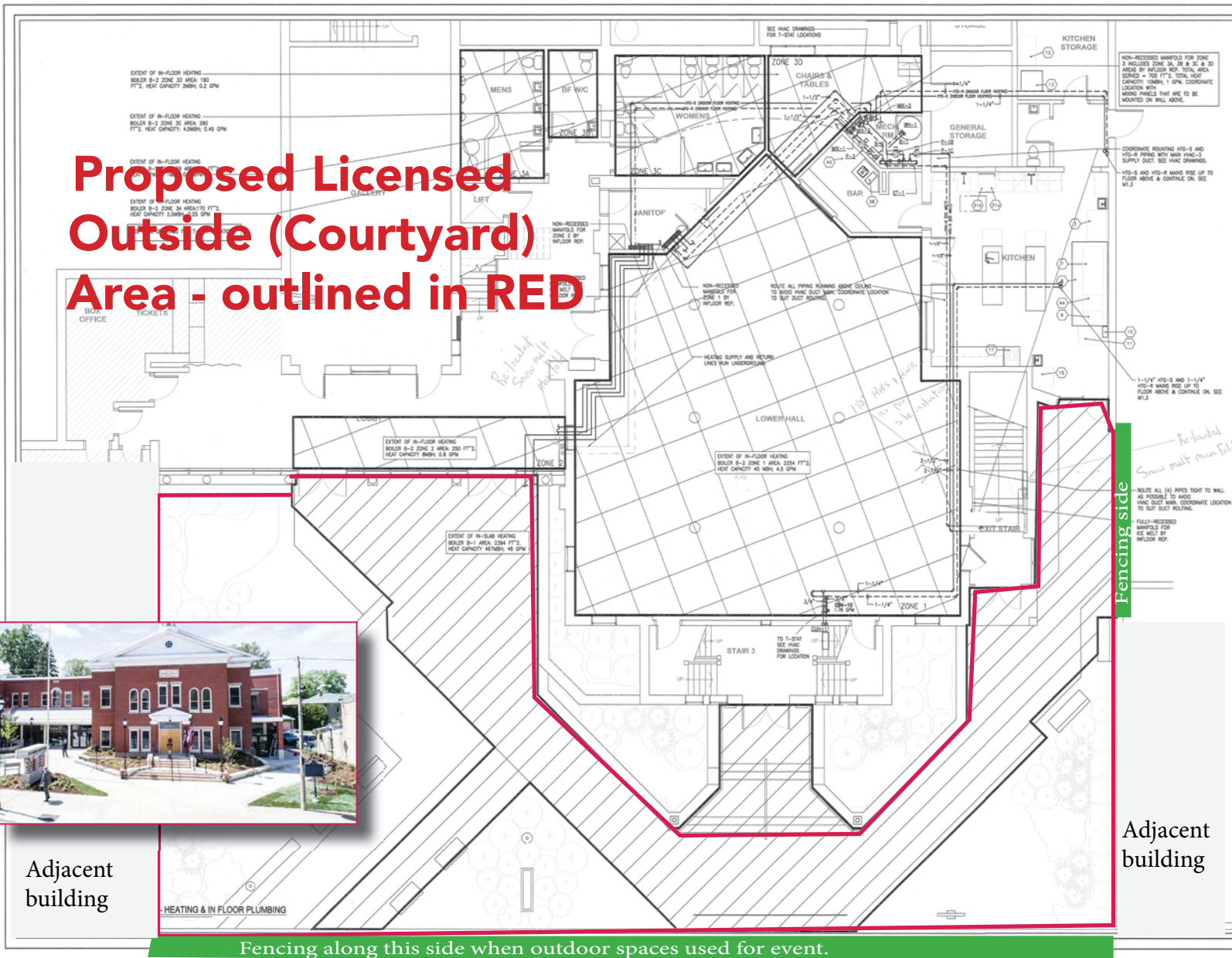
date : 05/16/14

job : 1450.00

Proposed Licensed Outside (Courtyard) Area - outlined in RED



Adjacent building



Fencing along this side when outdoor spaces used for event.

area marked by diagonal lines = 2394 sq ft representing most of the pavement area Capacity = $2394/12 = 199.5$

Alan Avis architects
80 West Street
Goderich, ON N7A 2K3
www.AlanAvisArchitects.com
T 519 524 5313
F 519 524 5253

INTEGRATED engineering
1930 Blue Heron Drive
London, ON N6H 5L9
Tel: 519-472-3688
Fax: 519-472-4322
www.integratedengineering.ca

Shamrock Mechanical
Solutions INC.
5475 15th Avenue
London Ontario, N6W 2J0

AS Built

No.	DATE	REMARKS
1	10/11/18	ISSUED FOR

All measurements must be checked on the work by the Contractor.
Do not scale the drawing.



Renovations and Addition at
Blyth Memorial Hall
431 Queen Street,
Blyth, Ontario
Lower Floor Heating & Infloor Plumbing

SCALE: 3/16" = 1'-0"

detail: a - Detail number b - Location drawing

drawn: ERL check: G.L.H.

date: 04NOV2014 sheet: M1.2

job: 1450.00