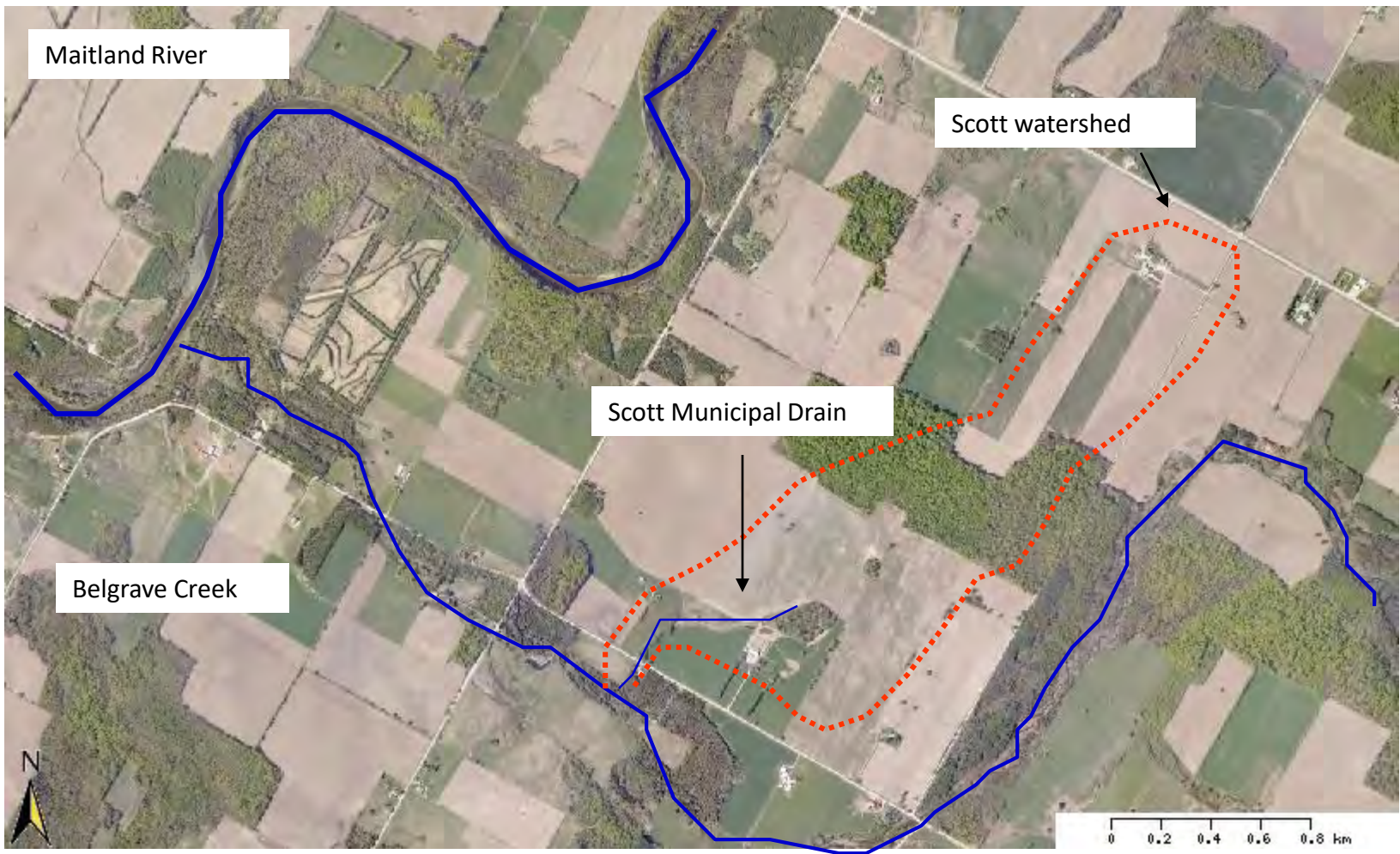




Maitland
CONSERVATION

Scott Municipal
Drain

Building
Resilience for
Climate Change



Rural Storm Water Management



04/01/2005



2006



2016





High flow conditions





16/06/2008



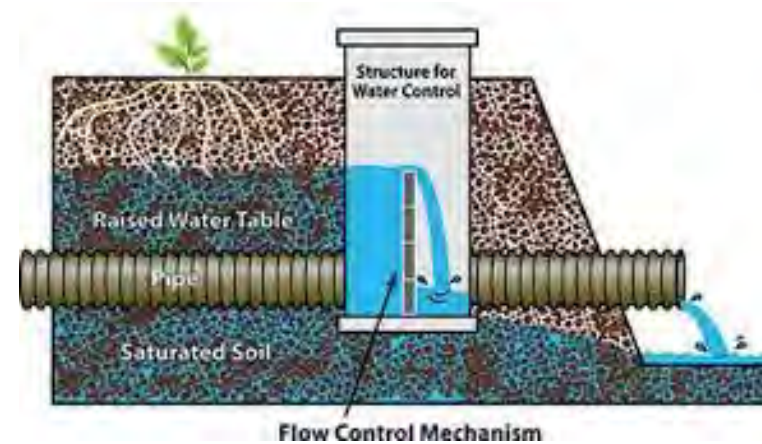


Tile outlet from barn roof

06/29/2006



Agri Drain Control Box



French drains that controls flows

2006



2008



Diversion berm



Modified Drain Cleanout



Before



04/01/2005

After



10/29/2005

Natural Channel Design – Self Cleaning/ better fish habitat/
improved drainage outlet/reduced cost to maintain and improved
water quality.





Brook Trout Spawning Habitat



23/09/2008

Grassed waterway and diversion berms



10/16/2006

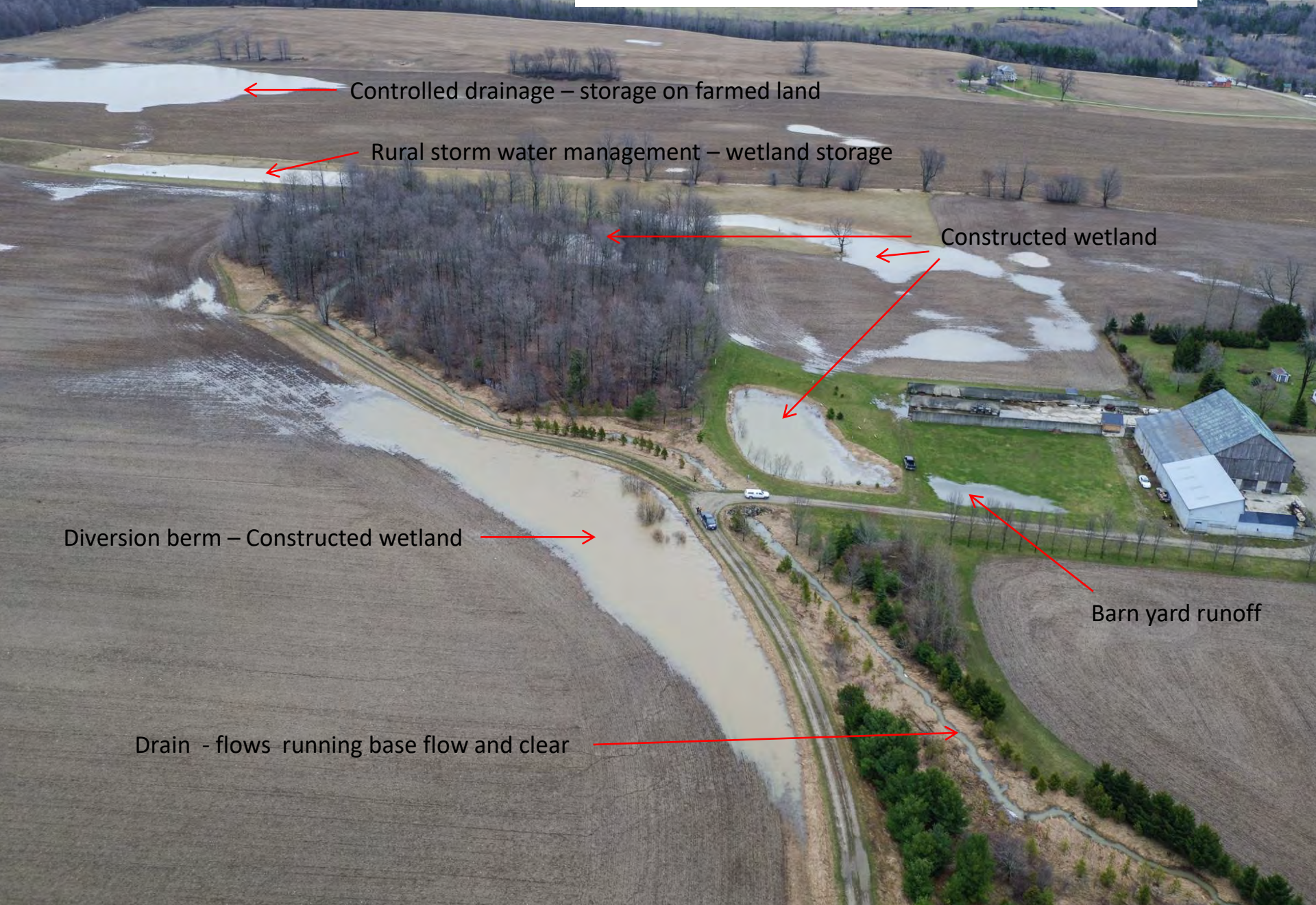
Waterway

2008 – Buffering – Natural Channel Design



31/10/2008

Scott Municipal Drain Project – Spring 2016



Controlled drainage – storage on farmed land

Rural storm water management – wetland storage

Constructed wetland

Diversion berm – Constructed wetland

Barn yard runoff

Drain - flows running base flow and clear

Rural Storm Water Management



After



Before

Educational Tours at the Demonstration Project



Murray's People mover



11/09/2006



05/07/2007

Section 78 Request – Drainage Act

Open Channel Improvements 90 m

Incorporate Past Rural Storm Water Management Projects
into the Drainage Report



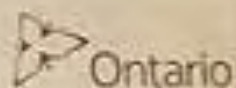
R.J Burnside – Estimate Project Costs

Estimated Project Costs:

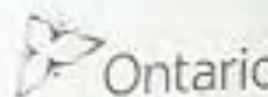
Engineering – Channel	\$15,000
Channel Restoration work	\$25,000
Plant material	\$ 3,000
Signage	\$ 1,000
Engineering – Drainage Act	<u>\$50,000</u>
Cost Estimate	\$94,000

Funding:

Drainage Act grant	\$26,400	(1/3 assessment for Agr lands)
Bruce Power	<u>\$ 67,600</u>	
Funding	\$94,000	



Prix minist
d'excell
envi
mentale



Minister's Award for
Environmental
Excellence

achievement,
in
excellence

