

Drawing to Accompany Temporary Easement Agreement for 431 Queen Street, Blyth

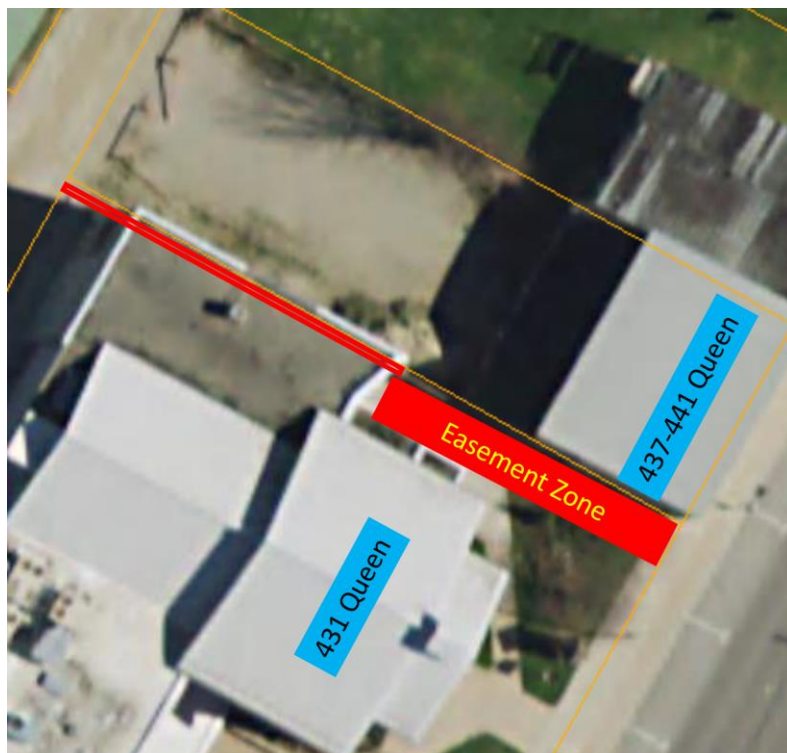


Image: Area requiring easement is in red.



Image: Fence type to be used to protect public from access to construction area.

Notes:

- 1) Loud / disruptive activities will be ceased when shows or activities are on at the Blyth Festival
- 2) Blyth Festival being provided contactor cell and email to advise contactor of activities that are not on the online calendar so that operations can be conducted as per 1) above