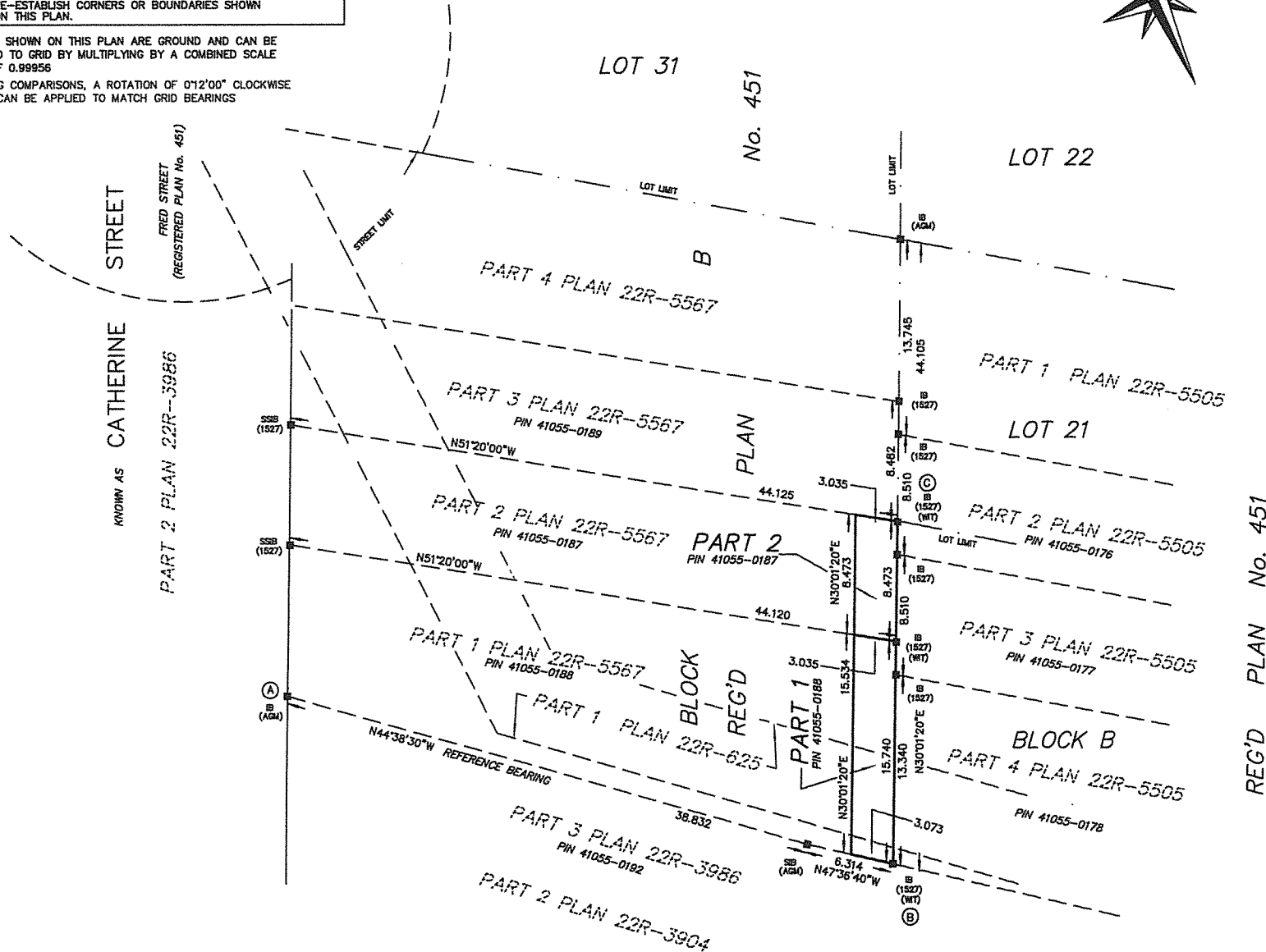


INTEGRATION DATA		
COORDINATES ARE DERIVED FROM GPS OBSERVATIONS USING SMARTNET NETWORK AND ARE REFERRED TO UTM ZONE 17 (81° WEST LONGITUDE) NAD83 (CSRS) EPOCH 2010. COORDINATE VALUES ARE TO A RURAL ACCURACY IN ACCORDANCE WITH SECTION 14(2) OF O.REG.216/10		
POINT ID	NORTHING	EASTING
A	4859469.1	475514.8
B	4859437.1	475546.6
C	4859458.0	475558.8
CAUTION: COORDINATES CANNOT IN THEMSELVES, BE USED TO RE-ESTABLISH CORNERS OR BOUNDARIES SHOWN ON THIS PLAN.		

DISTANCES SHOWN ON THIS PLAN ARE GROUND AND CAN BE CONVERTED TO GRID BY MULTIPLYING BY A COMBINED SCALE FACTOR OF 0.99956
FOR BEARING COMPARISONS, A ROTATION OF 0°12'00" CLOCKWISE CAN BE APPLIED TO MATCH GRID BEARINGS



I REQUIRE THIS PLAN TO BE DEPOSITED UNDER THE LAND TITLES ACT	PLAN 22R-6395
DATE: <u>MAY 19, 2016</u>	RECEIVED AND DEPOSITED
<u>[Signature]</u>	DATE: <u>May 19, 2016</u>
D.A. CULBERT ONTARIO LAND SURVEYOR	<u>K Clark</u> REPRESENTATIVE FOR LAND REGISTRAR FOR THE LAND TITLES DIVISION OF HURON (No 22)

PARTS SCHEDULE			
PART	BLOCK	PLAN	PIN
1	Part Of BLOCK B	451	PIN 41055-0188
2			PIN 41055-0187

THIS PLAN COMPRISES PART OF PINS 41055-0187 AND 41055-0188

PLAN OF SURVEY
OF PART OF
BLOCK B
REGISTERED PLAN No. 451
TOWN OF WINGHAM
TOWNSHIP OF NORTH HURON
COUNTY OF HURON
SCALE 1:250
Metric
2016
D. CULBERT LTD.
ONTARIO LAND SURVEYOR

NOTES AND LEGEND
BEARINGS ARE ASTRONOMIC AND ARE REFERRED TO THE NORTH LIMIT OF PART 3 PLAN 22R-3986 HAVING A BEARING OF N44°38'30"W AS SHOWN THEREON.

- DENOTES MONUMENTATION FOUND
- DENOTES MONUMENTATION PLANTED
- SIB DENOTES 2.5cm sq. STANDARD IRON BAR
- SSIB DENOTES 2.5cm sq. SHORT STANDARD IRON BAR
- IB DENOTES 1.6cm sq. IRON BAR
- CC DENOTES CUT CROSS
- WIT DENOTES WITNESS
- AGM DENOTES ARCHIBALD GRAY & McKAY LTD., O.L.S.
- 758 DENOTES B.M. ROSS, O.L.S.
- 1322 DENOTES C.R. KIAR, O.L.S.
- 1527 DENOTES D. CULBERT LTD., O.L.S.
- ALL PINS ARE SUFFIXED (LT) UNLESS NOTED (R)

SURVEYOR'S CERTIFICATE:
I CERTIFY THAT:
1) THIS SURVEY AND PLAN ARE CORRECT AND IN ACCORDANCE WITH THE SURVEYS ACT, THE SURVEYORS ACT AND THE LAND TITLES ACT AND THE REGULATIONS MADE UNDER THEM.
2) THE SURVEY WAS COMPLETED ON THE 6TH DAY OF APRIL, 2016

APRIL 6, 2016
GODERICH, ONTARIO

[Signature]
D.A. CULBERT
ONTARIO LAND SURVEYOR

D. CULBERT LTD. ONTARIO LAND SURVEYOR GODERICH, ONTARIO PHONE: 519-524-5321	ONTARIO DCL LAND SURVEYOR
DRAWN BY: BDCS CHECKED BY: DAC	DIGITAL FILE: W1603R1 FILE No: WNG-0451-0-17
PLAN No: 2-GZ-1983	

METRIC: DISTANCES AND CO-ORDINATES SHOWN ON THIS PLAN ARE IN METRES AND CAN BE CONVERTED TO FEET BY DIVIDING BY 0.3048